

ILMA GHS Survey: Summary

SHERA/Metalworking Committees

2014 Management Forum

April 10th, 2014

ILMA GHS Survey: Summary

- 51 Manufacturing Members responded out of 126 surveys sent, a little over 40%
- Most all Manufacturing Member companies are small businesses: 43% of respondents employ between 10 and 50
- We use a large number of raw materials: 27% use between 100 and 200 and another 25% use between 200 and 300

ILMA GHS Survey: Summary

- 41% of respondents have between 10 and 50 raw material suppliers; another 29% have between 50 and 100 suppliers.
- 36% of respondents have more than 500 MSDSs which need to be converted to SDSs. Less than 10% have fewer than 100 to convert
- 70% of respondents have received fewer than 10% of their needed GHS-compliant SDSs; less than 5% have received more than 70%

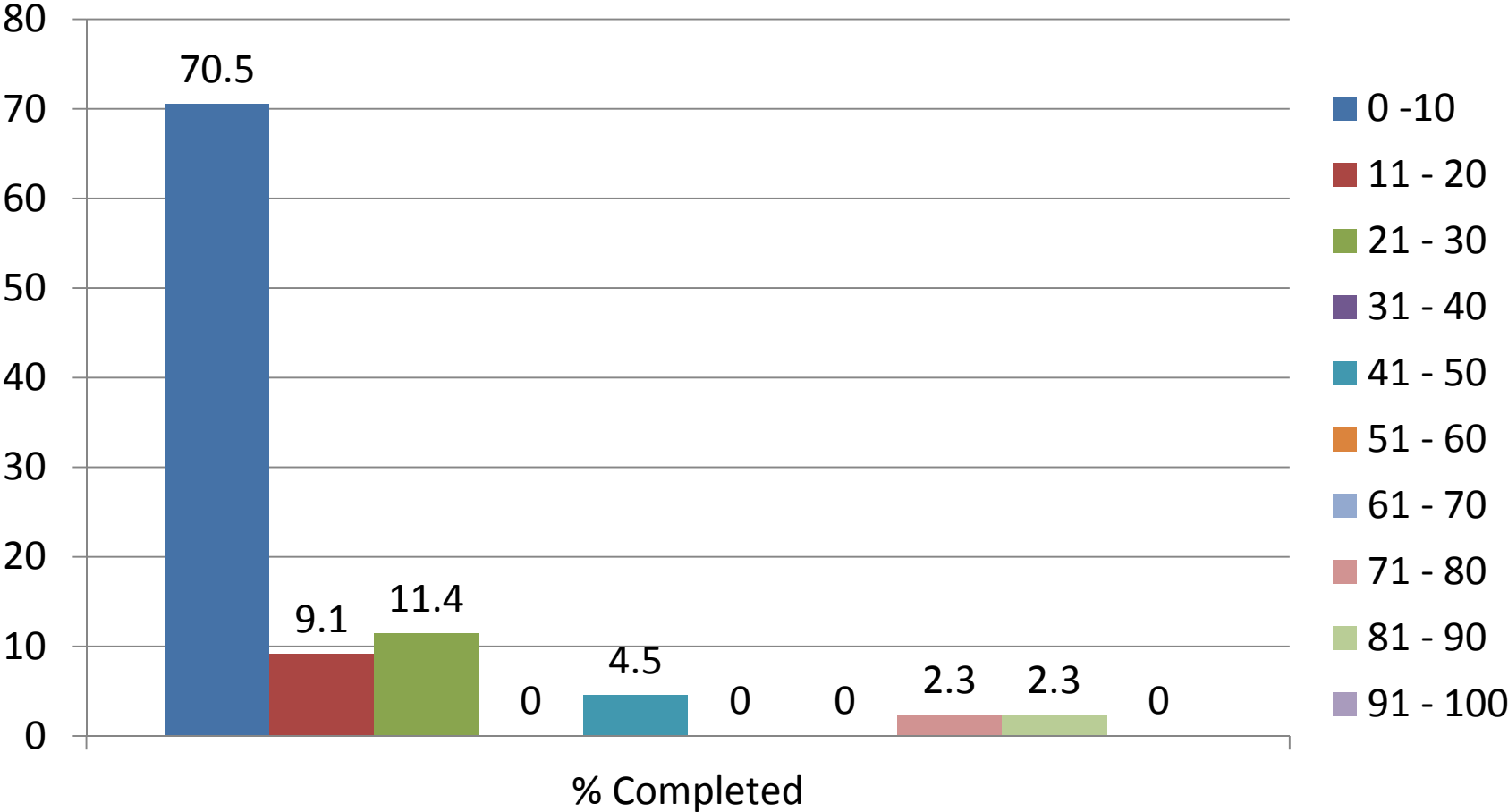
ILMA GHS Survey: Summary

- Few SDSs have been created so far: 75% of respondents have completed less than 10% of their SDSs. But, 8% have created over 70%
- Biggest obstacle? Not receiving GHS-compliant SDSs from upstream suppliers. 80% cite that as the biggest obstacle
- Next largest obstacles? Costs of authoring software, cited by 35% of respondents, and not having internal expertise, cited by 31%

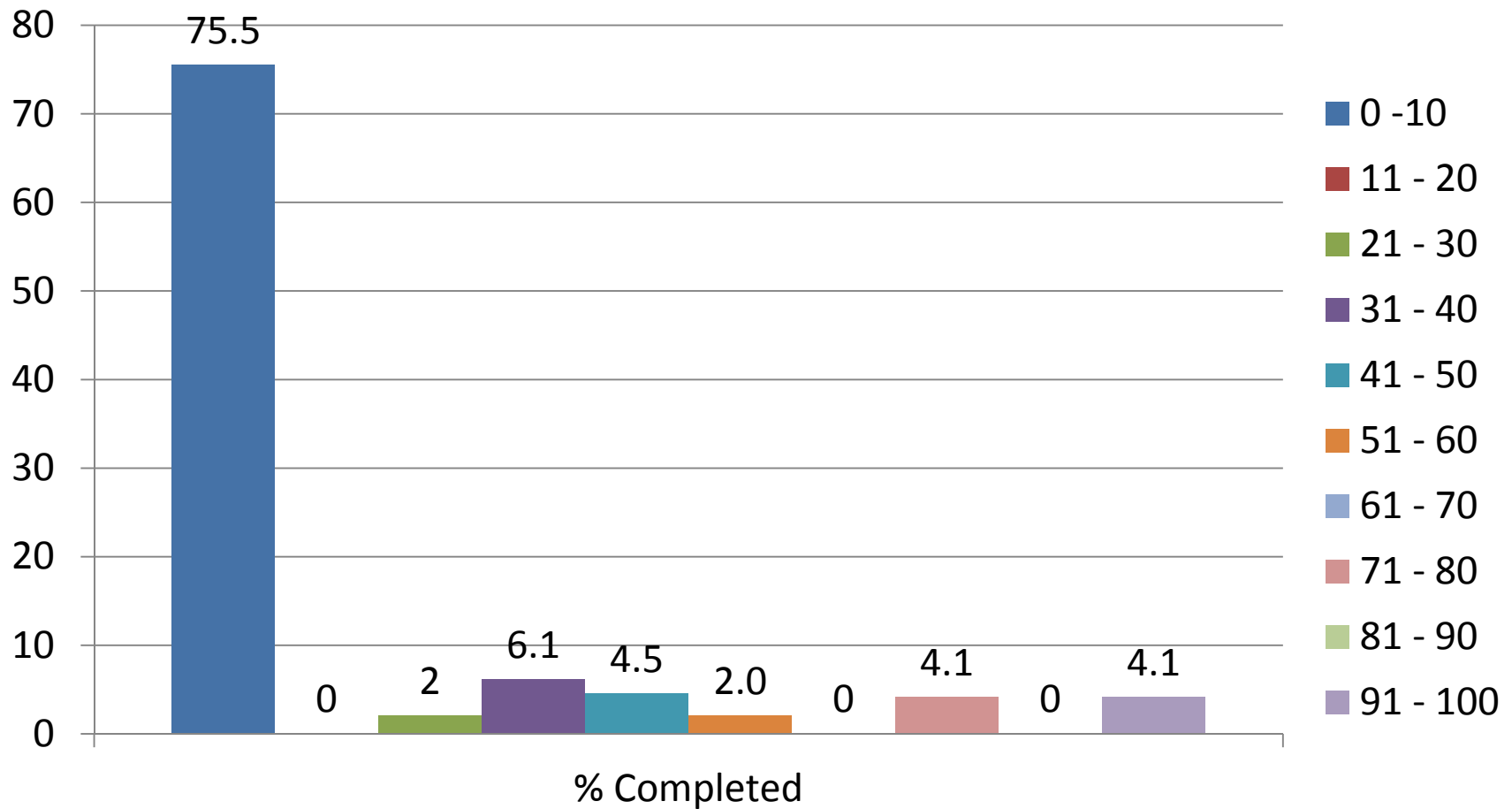
ILMA GHS Survey: Summary

- Among additional services needed:
 - Specialized authoring software, 65%
 - Color printer, 48%
 - 3rd party authoring services, 37%
 - 3rd party classification consulting services, 37%
- Costs per SDS: less than \$400, 39%; \$600-700, 20%; but greater than \$1,000/SDS, 15%
- Time to complete conversion to GHS-compliant SDSs after all upstream SDSs are received: 36%, 4 – 6 months; 23%, 10 – 12 months

Question 5: What percentage of fully GHS-compliant SDSs you have received from your suppliers?



Question 6: What percentage of your product MSDSs have been converted to GHS-compliant SDSs?



Question 16: If you had all or your upstream raw material SDSs in hand today, how many months would it take to complete the task of classifying and finalizing GHS-compliant SDSs and labels?

